

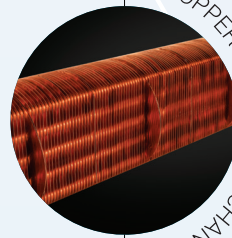
SINCE 1984<sup>®</sup>

# CHILTON

**& One  
Only  
Chiller  
in the  
World** With **PFAS**  
PREDICTIVE  
FAULT  
ALERT  
SYSTEM



SMS ALERTS IN ADVANCE



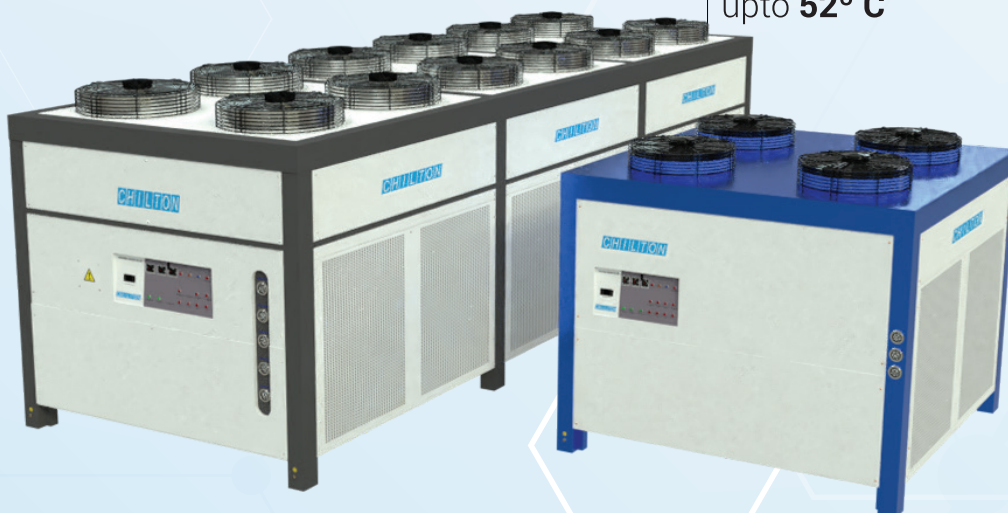
COPPER FINN HEAT EXCHANGER

Saves  
**15 %** Electricity

Increases  
Efficiency by **20%**

Durability **20%**  
higher than  
conventional

Built to withstand  
ambient temperatures  
upto **52° C**



Industrial Process Chillers

# High Precision Chillers

At Chilton, we understand that the design and development of Industrial process chillers are vital in producing quality products and require precision engineering and sound technical knowledge. Unlike regular cooling systems like air conditioners, Industrial process chillers have to rapidly control temperatures, sometimes in a matter of a few minutes. The performance of an industrial process chiller directly determines the quality of your product and its production rate.

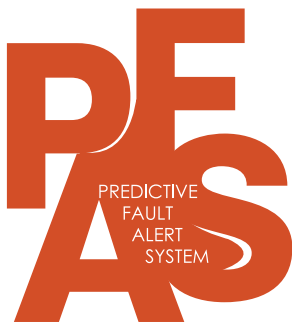
Chilton Industrial Process Chillers (IPCs) are sophisticated chillers which are most used type of chillers due to their suitability with wide application areas. Chilton manufactures these temperature critical systems that function under constrained durations of time. Plastics application is estimated to account for the largest market share among all the applications, in terms of value, followed by chemicals & petrochemicals, food & beverages, medical & pharmaceutical and rubber industry.

The industrial chillers from CHILTON are customised and built in a wide range from 2 tons to 100 tons.

## Unique chilling Solutions for

- **Plastic Industry**
- **Carbonated Beverage Manufacturers**
- **Spice Extracting & Processing Units**
- **Hospitals & Laboratories**
- **Fisheries & Aquaculture**
- **Dairy Product Manufactures**
- **Electrolysis Plants**





# Predictive Fault Alert System

Minimising break downs is a sure way to increase production of your plant. To bring down the possibility of a breakdown, we have developed PFAS (Predictive Fault Alert System). Before the chiller breaks down, in advance, you will get a SMS message in your mobile forewarning you. This helps you to rectify any upcoming break downs beforehand.

### SMS alerts are sent to you of breakdown chances.

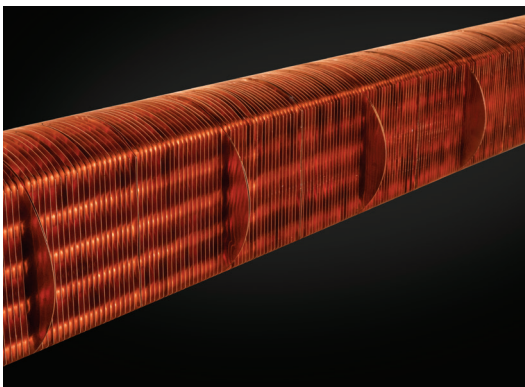
- Condenser becoming choked
- Condenser fan malfunctioning
- Reduction in water flow rate

### PFAS also alerts in the event of: ahead

- HP Trip
- LP Trip
- Compressor OLR trip
- Pump OLR trip
- Compressor Over heat

### Advantages you get:

- Reduces compressor failure
- Increases power saving
- Reduces breakdown thereby increasing production
- Reduces maintenance cost
- Easy for Maintenance.



## Heat Exchanger with multiple Copper Fins

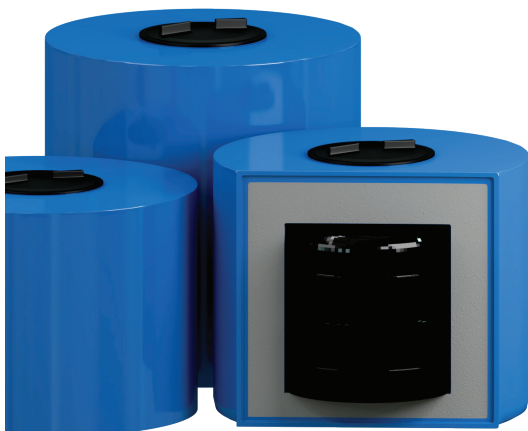
Due to its high thermal conductivity, copper is the best metal to transfer heat. We use 100% copper in our Heat Exchanger and it is made of copper tubes with multiple copper fins. The shell is made of stainless steel which avoids rusting and gives better life to heat exchanger.

### Advantages of Chilton Heat Exchangers

- Faster Cooling – Chilton uses high efficient Heat Exchanger
- 15% higher efficiency due to multiple Copper Fins (No competitor provides this)
- Due to high heat transfer. Running time of compressor will be less resulting in lower power consumption
- Flow of water is in a zig zag manner, resulting in good agitation of hot and cold water resulting in better heat transfer.
- Designed for easy repair, hence less maintenance

SAVES **15%** ELECTRICITY

## Larger Capacity External P.U.F Insulated Tanks



- Provides 2 inch P.U.F insulation for tanks
- 2 inch P.U.F insulation prevents cooling losses thereby reducing compressor running time and increasing energy savings
- Provides 3-5 times the usual tank capacity (500-5000L)
- Increased reservoir capacity decreases number of times compressor switches ON/OFF. This also improves life of compressor as well as electrical devices as compressor draws 3-4 times starting current than running current.

REDUCING THE FREQUENCY OF COMPRESSOR **20%** MORE LIFE



# 10 ADVANTAGES THAT ADD-VALUE TO CHILTON CHILLERS

SL.NO	ADVANTAGES	CHILTON	COMPETITOR	REMARKS
1.	PFAS	✓	✗	The chillers are connected to your expensive machinery. A chiller breakdown may result in heavy production losses. We have taken utmost care while designing our chiller to attain maximum productivity from your machines. Chilton chillers comes with PFAS, a continuous monitoring system which send SMS. The SMS alerts always forewarns you before the system breakdown due to condenser being chocked, decrease in water flow, over heating of compressor etc.
2.	Multiple copper fins and copper tube Heat Exchanger with SS Shell	✓	✗ They provide MS shell and copper tube Or Pipe dipped in tank (Where efficiency is very very less.)	As you all know, copper has high thermal conductivity which makes it the best metal for refrigeration. This fact is usually seen in newspaper ads for ACs which promise 100% copper. Our heat exchanger has multiple copper fins & copper tubes made at our own factory to stringent quality standards. This ensures high heat transfer which will reduce your power consumption, for eg: In a 10 ton chiller, the heat exchanger has 230 (210mm dia.) copper fins. The MS shell used by the competitors has a tendency to rust while SS shell used in Chilton is durable and does not rust.
3.	Power saving	✓	✗	By providing multiple copper fins, surface area increases manifold resulting in much faster heat transfer in the same way as a 5 star AC condenser with a bigger cooling coil size than 3 star improves surface area to heat transfer. The running time of the chiller is substantially decreased which in turn saves power.
4.	Separate pump for refrigeration	✓	✗	To get maximum efficiency from heat exchanger, separate pumps are provided for the two functions of refrigeration and process water. We provide customized process pump according to the exact flow rate and pressure. By selecting this method the overall power consumption of the pump will be less.
5.	Adjustable HP & LP	✓	✗ They provide Fixed HP & LP	By providing adjustable HP &LP, you can adjust high pressure cut-out & low pressure cut-out according to the requirement depending upon ambient temperature and process required.
6.	Chiller is designed for 52 °C ambient	✓	Most of the competitor designed it for 45 °C ambient	In peak summer also, the chiller will work smoothly.
7.	Higher capacity SS Internal Tank Or PUF Insulated External Tank	✓	Low capacity	The higher capacity tank with PUF insulation brings down the frequency of resting the compressor which consumes 3 times power every time. Our uniquely designed tank reduces the number of restarts. Thereby compressor life will be substantially increased.
8.	Easy wiring & Easily available components	✓	✗	The insulation of Chilton process chiller is easy and so is the maintenance. The electrical wiring inside is quite simple and the parts are readily available in the market for replacement, if a rare need occurs.
9.	Easy Maintenance	✓	✗	By keeping the side cover open, you can see the function of each component and analyze the complaint easily.
10.	Horizontal condenser	✓	✗	Keeping the condenser horizontal and fixing the fan at equidistance, the flow of air through the condenser remains equal, which improves the efficiency.



## PIONEER IN THE CHILLING AND COOLING INDUSTRY IN INDIA

Chilton has carved a niche for itself in the industry with unique customised solutions for clients across India and abroad. It manufactures various types of industrial chillers. At Chilton, our mission is to provide competent leadership in the areas of technological consulting to commissioning a wide range of innovative and sophisticated chilling and temperature control products. Chilton has been OEM supplier for HMT from 1987 onwards and blood bank refrigerators for a Japanese firm since 1999. Led by the stalwart Mr. P. G. Chilprakash, a NIT Calicut Alumnus, the flame of technological excellence is continued to be held high by son Vivek Chilprakash who had been a research associate at IIT, Mumbai. Currently CHILTON delivers all over India with full fledged branch operations in Ahmedabad, Bangalore, Chennai and Hyderabad. CHILTON has exported to clients in UAE, South Africa, Myanmar and Kenya



### Chilton Head Office

Chilton Towers, NH 47, Edappally,  
Kochi- 682024, Kerala, India

**SINCE 1984<sup>®</sup>**

# CHILTON

## CHILTON REFRIGERATION PVT LTD

### FACTORIES

#### AHMEDABAD, GUJARAT

Block No.115/118,  
Paiki,Vasna  
Chacharvadi, Tal:  
Sanand  
Ahmedabad, Gujarat  
Tel:+917994447604

### MARKETING OFFICES

#### KERALA

E-mail: [chiltonmktg@chiltonindia.com](mailto:chiltonmktg@chiltonindia.com)  
Call:+91 7994443021

#### AHMEDABAD

E-mail: [fact.gujarat@chiltonindia.com](mailto:fact.gujarat@chiltonindia.com)  
Call: +91 7994447604

#### BANGALORE

E-mail: [ka.sales@chiltonindia.com](mailto:ka.sales@chiltonindia.com)  
Call: +91 7994443022

#### HYDERABAD

E-mail: [ap.sales@chiltonindia.com](mailto:ap.sales@chiltonindia.com)  
Call: +91 8943478943

#### CHENNAI

E-mail: [tn.sales@chiltonindia.com](mailto:tn.sales@chiltonindia.com)  
Call: +91 7994447601

**[www.chiltonindia.com](http://www.chiltonindia.com)**

**An ISO 9001-2015 COMPANY**

## CHILTON PROCESS CHILLER ADVANTAGES

### REDUCES COMPRESSOR FAILURE

- Intelligent with alerts
- Increases productivity
- Build to withstand ambient temperatures upto 52°C

### INCREASES POWER SAVING

- Superior reliability
- Increases efficiency by 20%

### EASY FOR MAINTENANCE

- Increases Durability
- Durability 20% higher than conventional
- Separate pump for refrigeration and process

### LOW MAINTENANCE COST

- Adjustable HP & LP
- Higher capacity SS Internal Tank or PUF Insulated External Tank
- Easy installation & Easily available components

SINCE 1984<sup>®</sup>

SPECIALIZED PRODUCTS BY

**CHILTON**

#### ACID COOLING CHILLERS

A boon for electroplating industry, the chillers help to attain even temperature throughout the tank where acid is stored.

#### AIR CHILLER FOR SPICE POWDER MANUFACTURERS.

The chillers bring down the humidity and temperature of the spice powder so that the quality of the spice powder can be maintained for a long time.

#### ULTRA DEEP FREEZER AT -80°C

Combining high reliability and superior performance, these freezers are ideal for storage of samples, reagents, controls, tissues, rare blood and other biological materials.

#### DEEP FREEZER AT -400 - C WITH AIR FLOW

Combining reliability and performance with airflow inside the refrigerator gives superior efficiency. These freezers are ideal for storage of samples, reagents and antivenom.

#### SODA/COLA MAKING CHILLERS

For this industry the process chiller from Chilton gives exact temperature in soda/cola making to create better fizz by achieving perfect carbonated beverages.

#### WATER AT 0°C CHILLERS

Chilton developed this chiller especially for seafood processing unit where they are required for glazing of fish with ice. For better glazing in IQF, water at 0°C is more effective.

#### SEA WATER COOLING CHILLERS

Chilton has developed sea water cooling intended for aquaculture of cooler climate species where the environment is created in sea water itself

#### CHILLER AT -25 °C

We have -25°C industrial process chillers for brine cooling that perform in constrained time

#### VEG COOL

A patented pending product ideal for preservation of fruits, vegetables and flowers, this refrigerator locks in freshness for over 3 weeks and increases the shelf life of edible items